

2024 AWS Activities Hakushu plant

● Water Stewardship Project

Shared Water Challenges	AWS Outcome Goals	Long-Term Goals	Annual Goals	Activities	Performance	WS※1 plan for 2025
Establishing a governance structure for groundwater use	GOOD WATER GOVERNANCE	Continue implementing the WS Plan based on the governance structure	Update of WS Plan Conduct water-related training	Update of WS Plan Water-related training	1 evaluation and update completed 1 training session conducted	Update the WS governance structure
Ensuring sustainable and stable groundwater use	"	Briefings and exchanges of opinions with stakeholders regarding WS activities at least twice per year	Exchange opinions with stakeholders on water-related issues at least once	Exchange of opinions with local governments, companies, etc.	The Groundwater Conservation Council: 2 sessions conducted (achieved) Local governments: 0 sessions conducted in 2024 (unachieved)	Exchange opinions with stakeholders on water-related issues at least once
Appropriate and reasonable use of groundwater	SUSTAINABLE WATER BALANCE	Reduce WUR※3 by 30% (compared to 2015) by 2030 (all plants)	Target-setting and efforts to reduce water usage (per plant)	Initiatives to reduce water usage with an aim toward the target (per plant)	Reduced WUR 23% (all plants)	Target-setting and efforts to reduce water usage (per plant)
Management of wastewater quality	GOOD WATER QUALITY STATUS	Maintain annual targets through 2030 Wastewater quality: Maintain whichever is stricter between KORE※4 requirements and legal regulations Laws and regulations: Water Pollution Control Act KORE: Coca-Cola system internal standards	Wastewater quality: Maintain whichever is stricter between KORE requirements and legal regulations	Development of an annual schedule and external water quality analysis	Water quality inspections conducted as required by each standard	Wastewater quality: Maintain whichever is stricter between KORE requirements and legal regulations
Environmental beautification of rivers	IMPORTANT WATER-RELATED AREAS (IWRA※2)	Employee volunteer participation rate of 20% every year through 2030 ·Participation in Jingu River cleanup (10+ participants) ·Participation in Jingu River white gemstone collection (10+ participants) ·Participation in Ojira River cleanup (10+ participants)	·Participation in Jingu River cleanup (10+ participants) ·Participation in Jingu River white gemstone collection (10+ participants) ·Participation in Ojira River cleanup (10+ participants)	·Jingu River cleanup: 7 participants ·Jingu River white gemstone collection: 8 participants ·Ojira River cleanup: 7 participants	73% achieved	·Participation in Jingu River cleanup (10+ participants) ·Participation in Jingu River white gemstone collection (10+ participants) ·Participation in Ojira River cleanup (10+ participants)
–	"	Employee volunteer participation rate of 20% by 2030	Nature Experience Program: Coca-Cola “Learn from the Forest” Project, participation of 20+ employees (held biennially, target applies to most recent year)	September 2024 event: 13 participants	65% achieved	–
Management of forests in groundwater replenishment areas	"	Maintain water replenishment functions through 2030	Conduct at least one consultation with stakeholders to improve the target replenishment rate	Discussions with experts	3 sessions conducted (achieved)	Annual donation to prefectural forest management to maintain replenishment rate
–	SAFE WATER, SANITATION AND HYGIENE FOR ALL (WASH)	Provide drinking water to local organizations at least 5 times per year through 2030	Provide drinking water to local organizations at least 5 times	Provision of drinking water for local sporting events and cultural events	Provided water 8 times (achieved)	Provide drinking water to local organizations at least 6 times
–	"	Confirm water supply and sewerage infrastructure status in Hokuto City	Conduct one interview regarding water supply and sewerage infrastructure status in Hokuto City	Preparation for interviews in 2025	Selected interviewees for 2025	Conduct one interview regarding water supply and sewerage infrastructure status in Hokuto City

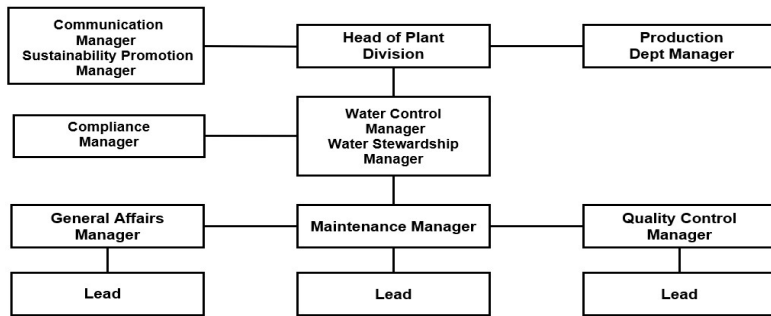
※1 WS: Water Stewardship

※2 IWRA: Important Water-Related Areas

※3 WUR: Water Use Ratio

※4 KORE: Coca-Cola Operating Requirements

● Governance Structure for Water Stewardship



● Effluent Quality Management / Performance Against Targets

Water Quantity/ Quality Indicators	Unit	Water Quantity	Legal Standard Value	Actual Value (Range)	Actual Value (Average)
Intake	km ³	648			
Discharge	km ³	271			
pH	-		5.8-8.6	6.2-8.2	6.9
BOD	mg/L		160	<1.0-1.9	1.3
COD	mg/L		160	0.5-1.0	0.7
SS	mg/L		200	<1.0-17	8.3
T-N	mg/L		120	<0.6	<0.6
T-P	mg/L		16	0.86-1.8	1.2